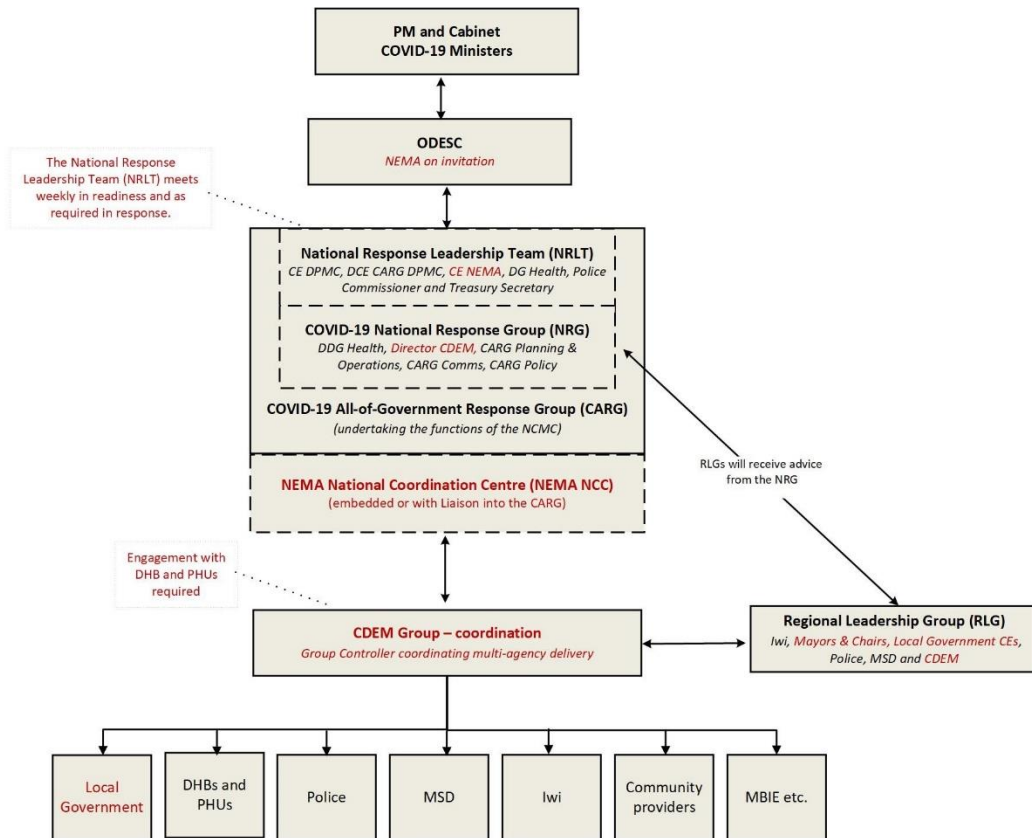


REGIONAL LEADERSHIP AND GOVERNANCE STRUCTURES COVID-19 RESURGENCE

This document provides a guide to the high-level roles and functions of key leadership and governance structures within the COVID-19 Resurgence work that affect Regional Coordination.

Not all agencies or functions are represented in the diagram and text below.



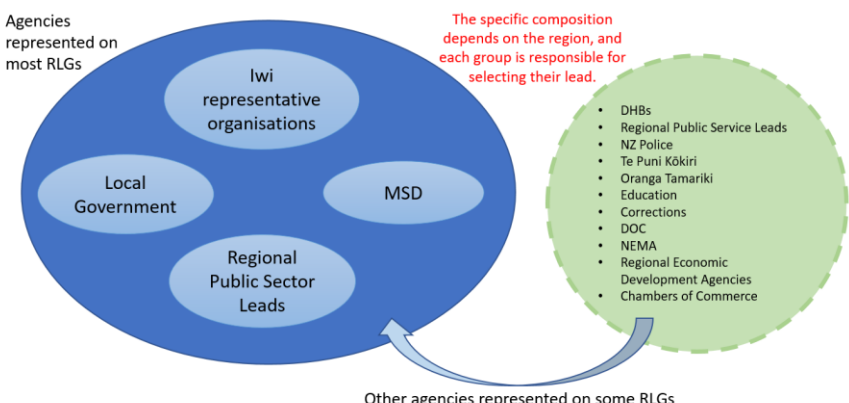
<p>National Response Leadership Team</p>	<p>The National Response Leadership Team (NRLT) consists of:</p> <ul style="list-style-type: none"> • Chief Executive of the Department of Prime Minister and Cabinet (DPMC) • Director-General of Health • Chief Executive, National Emergency Management Agency • Deputy Chief Executive, COVID-19 All-of-Government Response Group, DPMC • Treasury Secretary, The Treasury • Commissioner of Police <p>The NRLT has three primary roles:</p>
---	--

COVID-19 All-of-Government Response Group, CDEM Pillar.

V 1.1 13 August 2020

comments and changes to cdem.workstream@nema.govt.nz

	<ul style="list-style-type: none"> • provide All-of-Government advice to Cabinet (or COVID-19 Ministers); • provide non-health advice to the Director General of Health to inform his use of powers under the COVID Act; • engaging the COVID-19 National Response Group.
<p>CARG Response Leadership Group</p>	<p>The COVID-19 All of Government Response Group consists of:</p> <ul style="list-style-type: none"> • AOG Operations and Planning • AOG Policy • AOG Comms • DDG Health • Director CDEM <p>They are responsible for the functional lead of activity within the All of Government COVID-19 All-of-Government Response Group Coordination Centre.</p>
<p>Regional Leadership Groups</p>	<p>The Regional Leadership Groups (RLG) support social and economic recovery in each of the 16 regions. This has been key in Caring for Communities AOG work.</p> <p>They are looking to <i>provide Governance at a regional level to guide and support community resurgence planning and response activity</i>. In resurgence the RLG role is one of:</p> <ul style="list-style-type: none"> • convening leadership and ensuring a regional Strategy/Plan that caters to different communities • connecting local government, iwi, Pasifika, ethnic communities and key central government personnel • support the distribution of key messages and aid to community networks. This would wrap around and support the implementation of the resurgence plan (led by CDEM) <p>The RLG will also support the distribution of key messages and aid to community networks. This will wrap around and support the implementation of the resurgence plan (by CDEM).</p> <p>The CDEM Group Controller will lead on operational response, be embedded into the RLG structure, keep the RLG abreast of issues and call on its leadership for support.</p>

	<p>Generic structure and make up of RLG</p>  <p><i>Notes on Governance from the CIMS 3rd edition.</i></p> <p>Every response has executive oversight, known as Governance. Governance arrangements can be complex and dynamic. Formal structures may be less important than relationships between individuals and organisations. Governance does not manage a response. That responsibility falls to the Controller who must have the formal delegation and/or endorsement for the role in accordance with statutory provisions or internal arrangements. In this instance, Governance will typically:</p> <ul style="list-style-type: none"> • Communicate and influence the strategic direction outside the operational response at a regional or local level. • Exercise oversight, assigns resources, and may impose constraints (e.g. deadlines, cost and resource limits). • May act as spokesperson.
<p>CDEM Group Controller</p>	<p>CDEM Group Controller is appointed by the CDEM Group (see below) and will undertake their legislative role and coordinate the regional response to emergencies (declared or undeclared).</p> <p>CDEM Group Controllers will establish appropriate coordination structures and facilities as required. Agencies such as Police or Health will remain responsible for their own activity and may also choose to establish local agency EOC or Emergency Coordination Centres where required.</p> <p>They are expected to engage with and coordinate their activity through the CDEM Group Structures.</p>

<p>CDEM Group</p>	<p>Civil Defence Emergency Management Groups (CDEM Groups) are a core component of the CDEM Act 2002. 16 CDEM Groups have been formed across New Zealand as committees of elected councillors from each council within regional boundaries.</p> <p>Each CDEM Group is required to establish and maintain a Coordinating Executive Group (CEG) comprising chief executives of the local authority members of the CDEM Group, chief executives of District Health Boards, and senior members of New Zealand Police, and Fire and Emergency New Zealand. CEGs may also co-opt in additional members, this often includes senior ambulance services, New Zealand Defence Force and Iwi representatives.</p> <p>The Group delivers CDEM through its executives, planners and operational staff of the many agencies involved in CDEM. Groups can be viewed as a consortium of the local authorities in a region working in partnership with emergency services, lifeline utilities and government departments, amongst other things, to:</p> <ul style="list-style-type: none"> • identify and understand hazards and risks • prepare CDEM Group plans and manage hazards and risks in accordance with the 4R's (reduction, readiness, response and recovery). <p>CDEM Groups coordinate the response to emergencies in their region (declared or undeclared) via Emergency Coordination Centres (ECC). These ECCs operate under a CIMS structure, include liaison staff from responding agencies and organisations (including lifeline utilities and welfare services delivery), and are led by a Group Controller who are appointed by the Coordinating Executive Group (CEG).</p>
--------------------------	---